

SEE SHEET 30

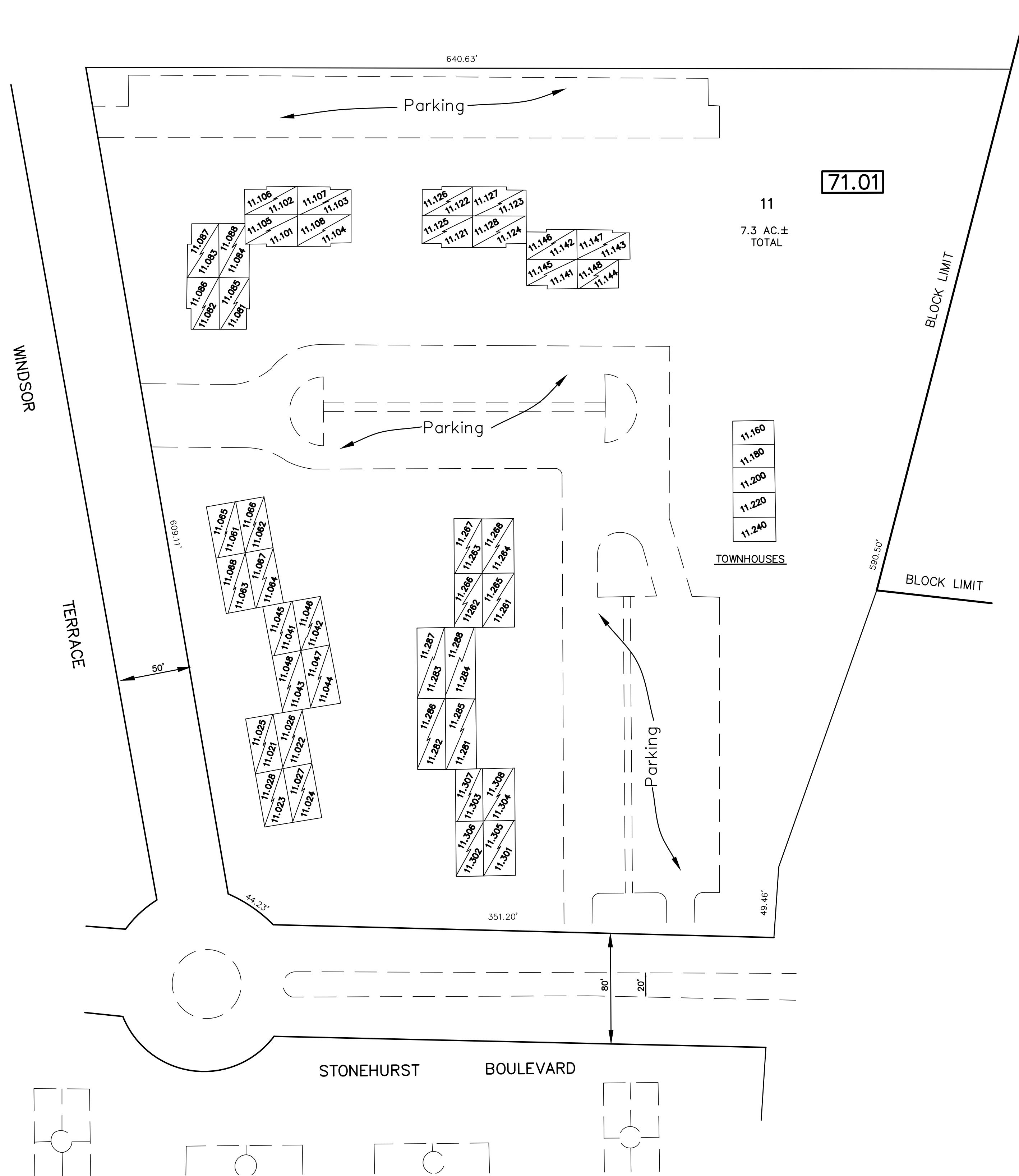
REVISIONS		
DATE	NAME	LIC. NO.

THIN DIAGONAL LINE REPRESENTS TWO LEVEL CONDOMINIUMS
 LOT NUMBER ENDING WITH 5-8 REPRESENTS SECOND FLOOR UNITS
 LOT NUMBER ENDING WITH 1-4 REPRESENTS FIRST FLOOR UNITS

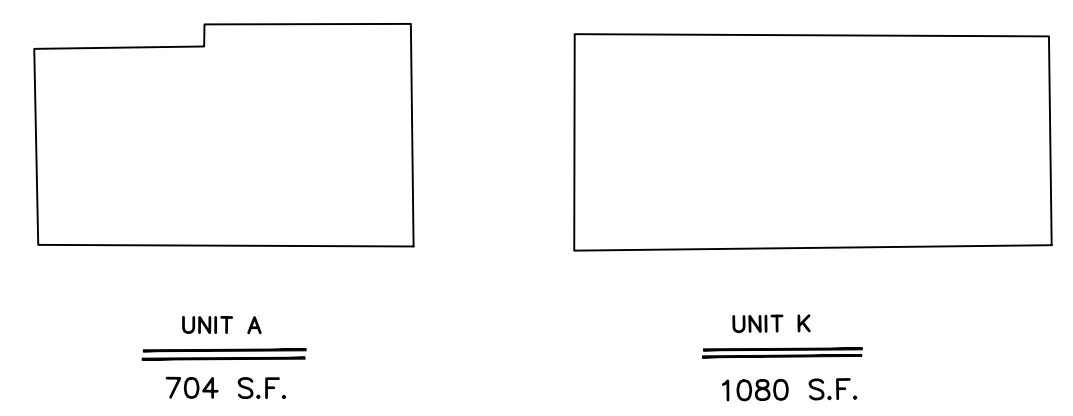


SEE SHEET 30.03

SEE SHEET 30



TYPICAL UNITS



SEE SHEET 30.01

TM
 ASSOCIATES
 11 TINDALL ROAD
 MIDDLETOWN, NJ 07748
 TEL 732-671-6400
 FAX 732-671-7365
 NEW JERSEY BOARD OF
 PROFESSIONAL ENGINEERS AND
 LAND SURVEYORS
 CERTIFICATE OF AUTHORIZATION
 246A27987500

TAX MAP
 TOWNSHIP OF FREEHOLD
 MONMOUTH COUNTY, NEW JERSEY
 SCALE: 1" = 50' JANUARY, 2008
 TIMOTHY P. WHITE, P.E., P.L.S.
 1 MUNICIPAL PLAZA
 FREEHOLD, NEW JERSEY 07728

THIS MAP HAS BEEN DRAWN USING COMPUTER AIDED DRAFTING/DESIGN (CAD/D) AND COORDINATE GEOMETRY.

THIS MAP IS A COPY OF THE ORIGINAL MAP PREPARED BY WILLIAM HELD, P.E. & P.L.S. DATED MARCH 1962. THE ORIGINAL MAP IS ON FILE IN THE ENGINEER'S OFFICE.