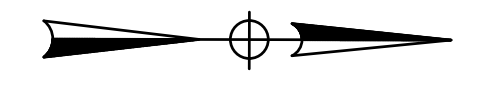
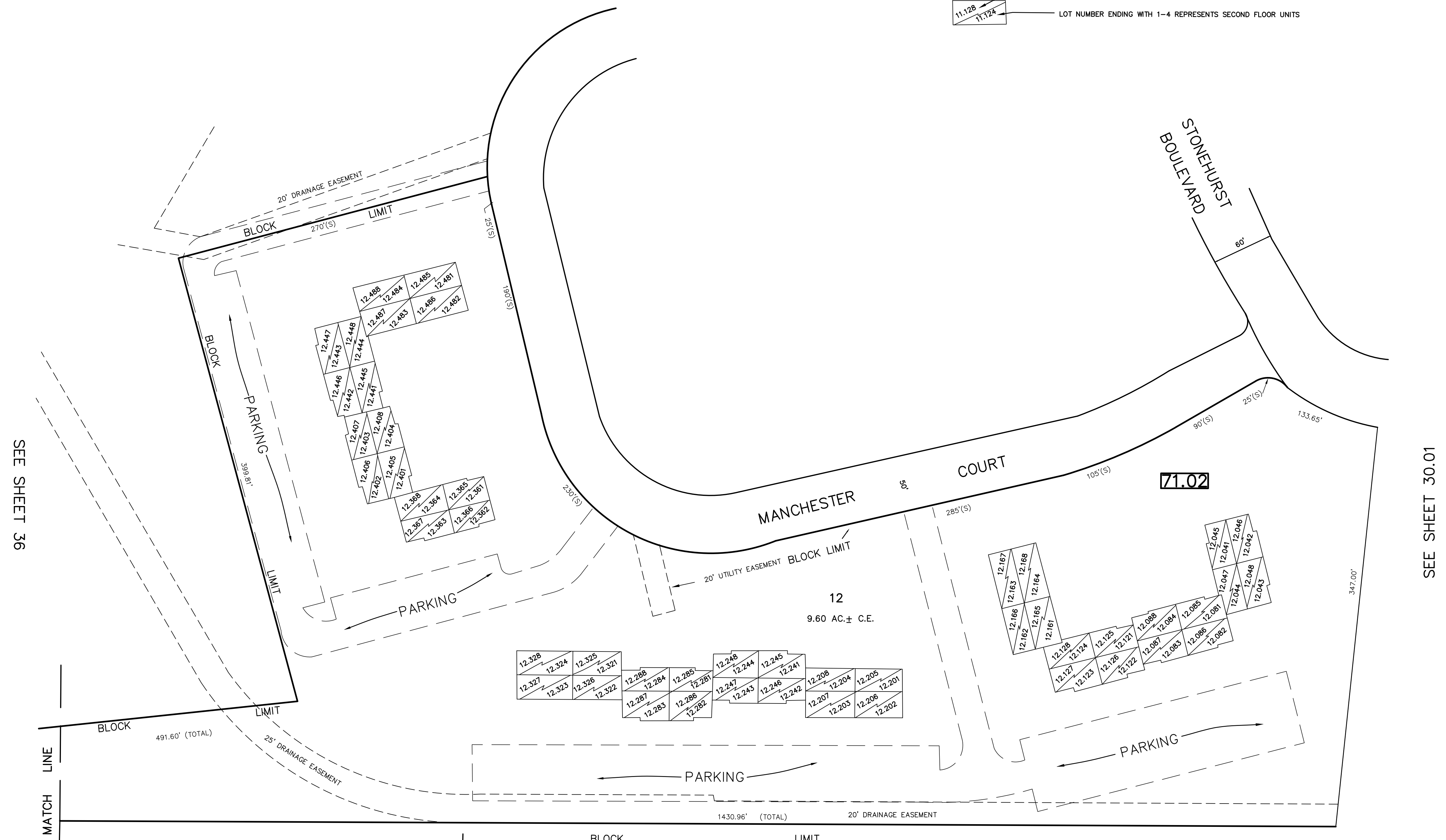


REVISIONS		
DATE	NAME	LIC. NO.

SEE SHEET 30.05

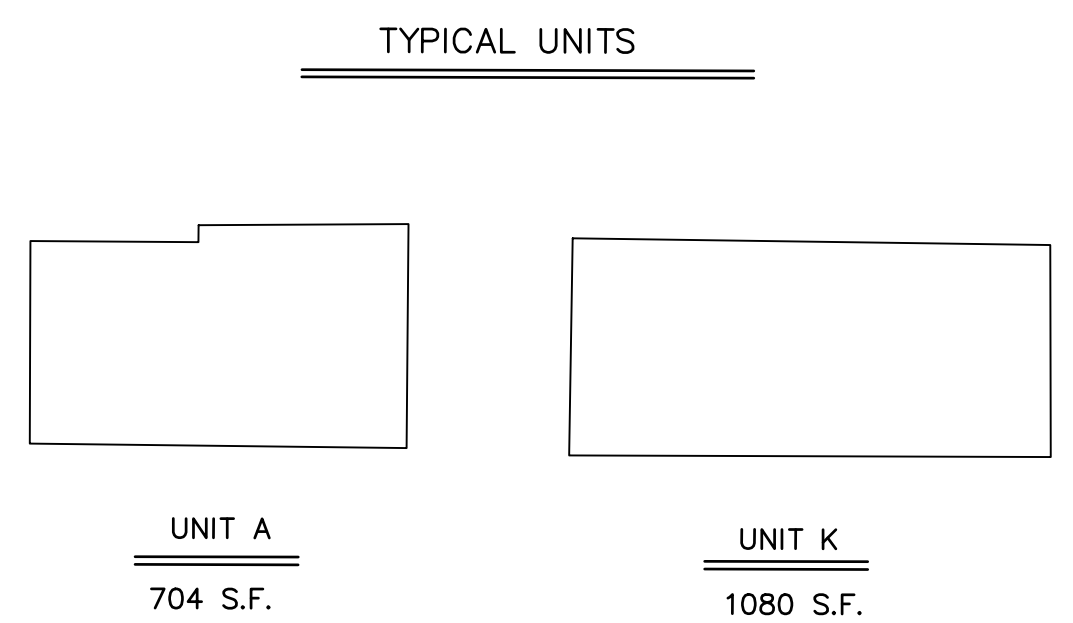
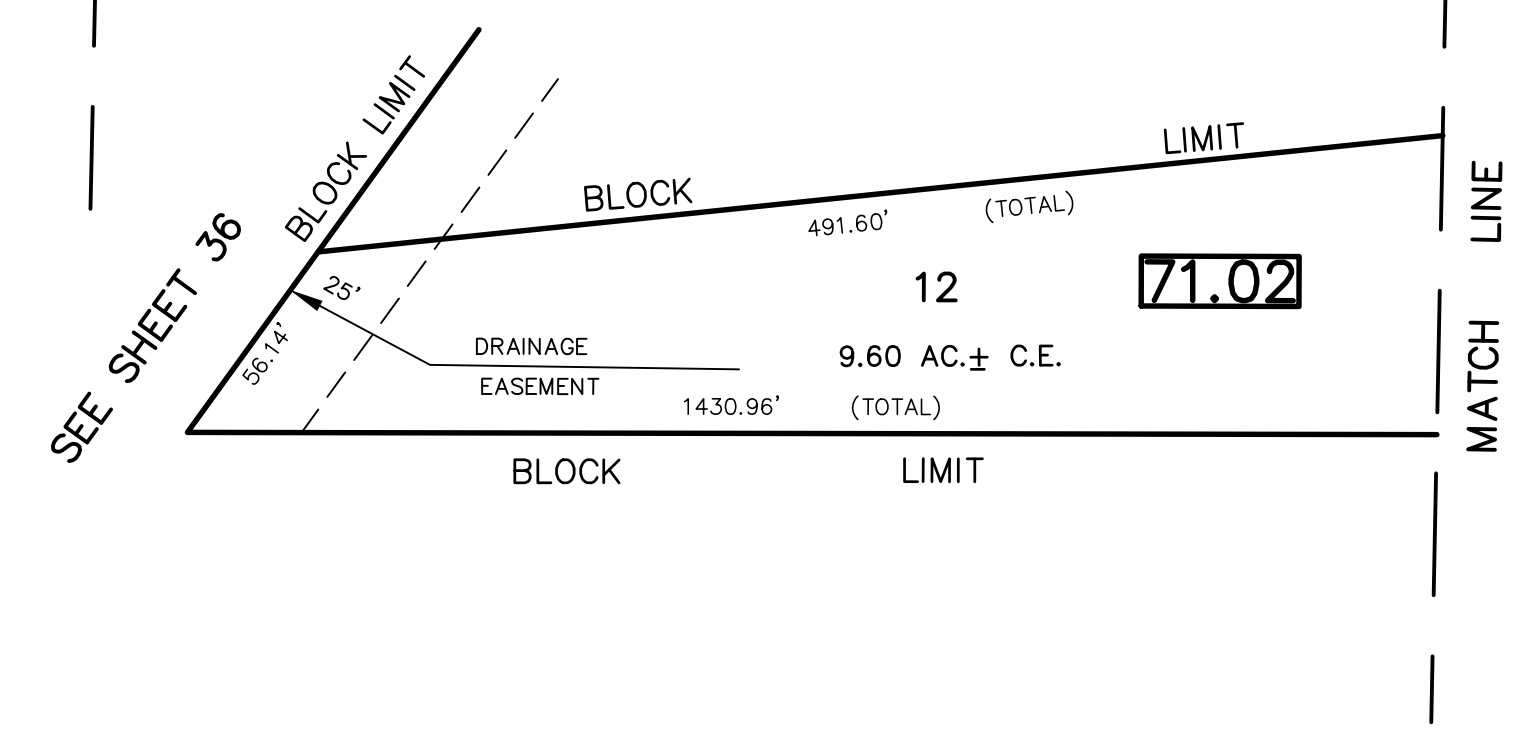


THIN DIAGONAL LINE REPRESENTS TWO LEVEL CONDOMINIUMS
 LOT NUMBER ENDING WITH 5-8 REPRESENTS SECOND FLOOR UNITS
 LOT NUMBER ENDING WITH 1-4 REPRESENTS SECOND FLOOR UNITS



SEE SHEET 36

SEE SHEET 30.01



SEE SHEET 30



TAX MAP
 TOWNSHIP OF FREEHOLD
 MONMOUTH COUNTY, NEW JERSEY
 SCALE: 1" = 50' JANUARY, 2008
 TIMOTHY P. WHITE, P.E., P.L.S.
 1 MUNICIPAL PLAZA
 FREEHOLD, NEW JERSEY 07728

THIS MAP HAS BEEN DRAWN USING COMPUTER AIDED DRAFTING/DESIGN (CAD/D) AND COORDINATE GEOMETRY.

THIS MAP IS A COPY OF THE ORIGINAL MAP PREPARED BY WILLIAM HELD, P.E. & P.L.S. DATED MARCH 1962. THE ORIGINAL MAP IS ON FILE IN THE ENGINEER'S OFFICE.