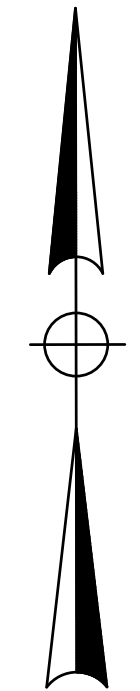
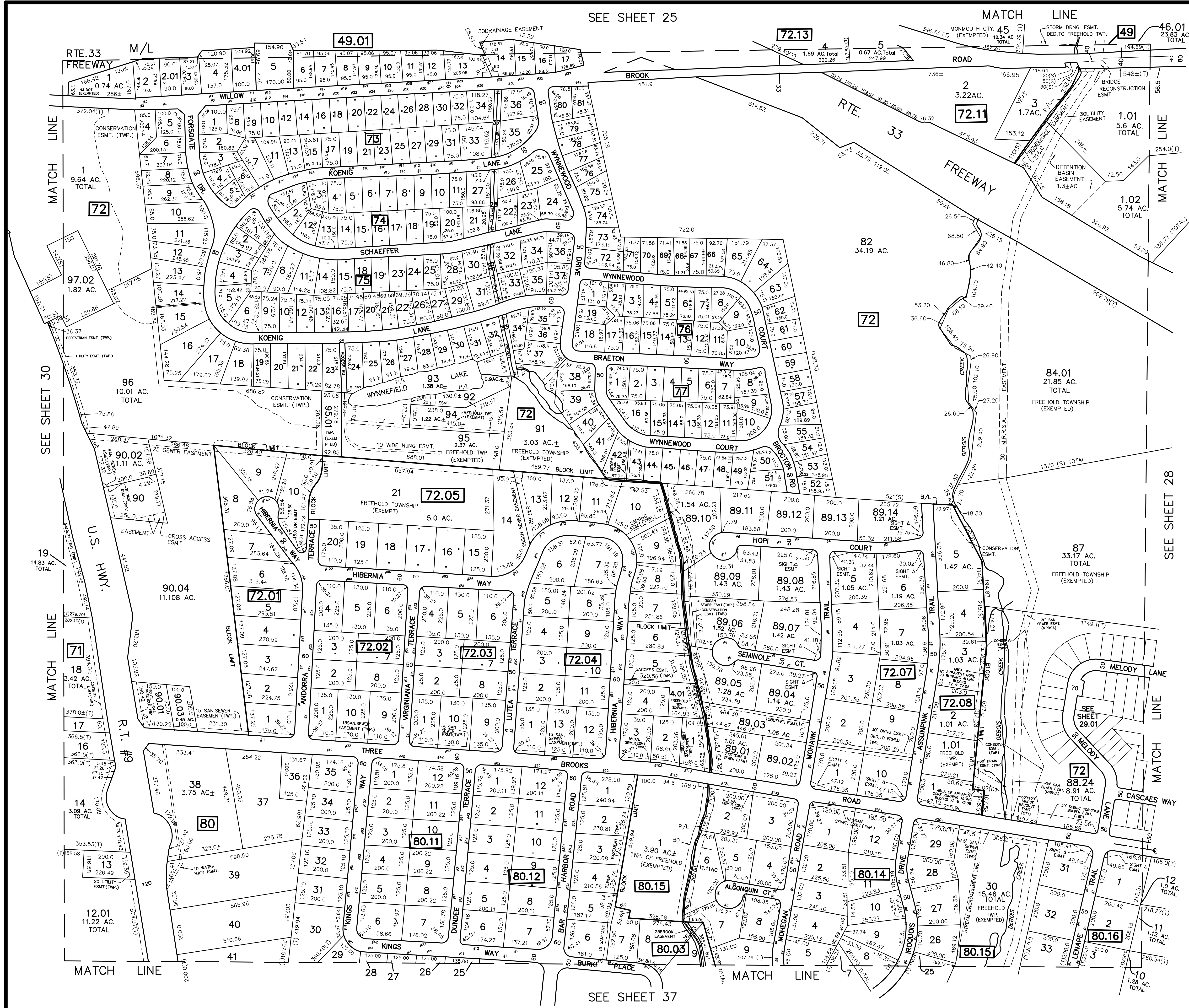


SEE SHEET 25

MATCH LINE

REVISIONS		
DATE	NAME	LIC. NO.
3/12/10	JOSEPH M. MAVURO	24GB02424600
4/15/10	JOSEPH M. MAVURO	24GB02424600
4/20/10	JOSEPH M. MAVURO	24GB02424600
12/3/10	JOSEPH M. MAVURO	24GB02424600
7/18/12	JOSEPH M. MAVURO	24GB02424600
10/22/13	JOSEPH M. MAVURO	24GB02424600
9/7/16	TIMOTHY P. WHITE	24GB04257000
6/1/17	TIMOTHY P. WHITE	24GB04257000
11/18/20	TIMOTHY P. WHITE	24GB04257000
1/27/23	TIMOTHY P. WHITE	24GB04257000



TM
 ASSOCIATES
 11 TINDALL ROAD
 MIDDLETOWN, NJ 07748
 TEL 732-671-6400
 FAX 732-671-7365
 NEW JERSEY BOARD OF
 PROFESSIONAL ENGINEERS AND
 LAND SURVEYORS
 CERTIFICATE OF AUTHORIZATION
 24GA27987500

TAX MAP
TOWNSHIP OF FREEHOLD
MONMOUTH COUNTY, NEW JERSEY
 SCALE: 1" = 200' JANUARY, 2008
TIMOTHY P. WHITE, P.E., P.L.S.
 1 MUNICIPAL PLAZA
 FREEHOLD, NEW JERSEY 07728

THIS MAP HAS BEEN DRAWN USING COMPUTER AIDED DRAFTING/DESIGN (CAD/D) AND COORDINATE GEOMETRY.

THIS MAP IS A COPY OF THE ORIGINAL MAP PREPARED BY WILLIAM HELD, P.E. & P.L.S. DATED MARCH 1962. THE ORIGINAL MAP IS ON FILE IN THE ENGINEER'S OFFICE.