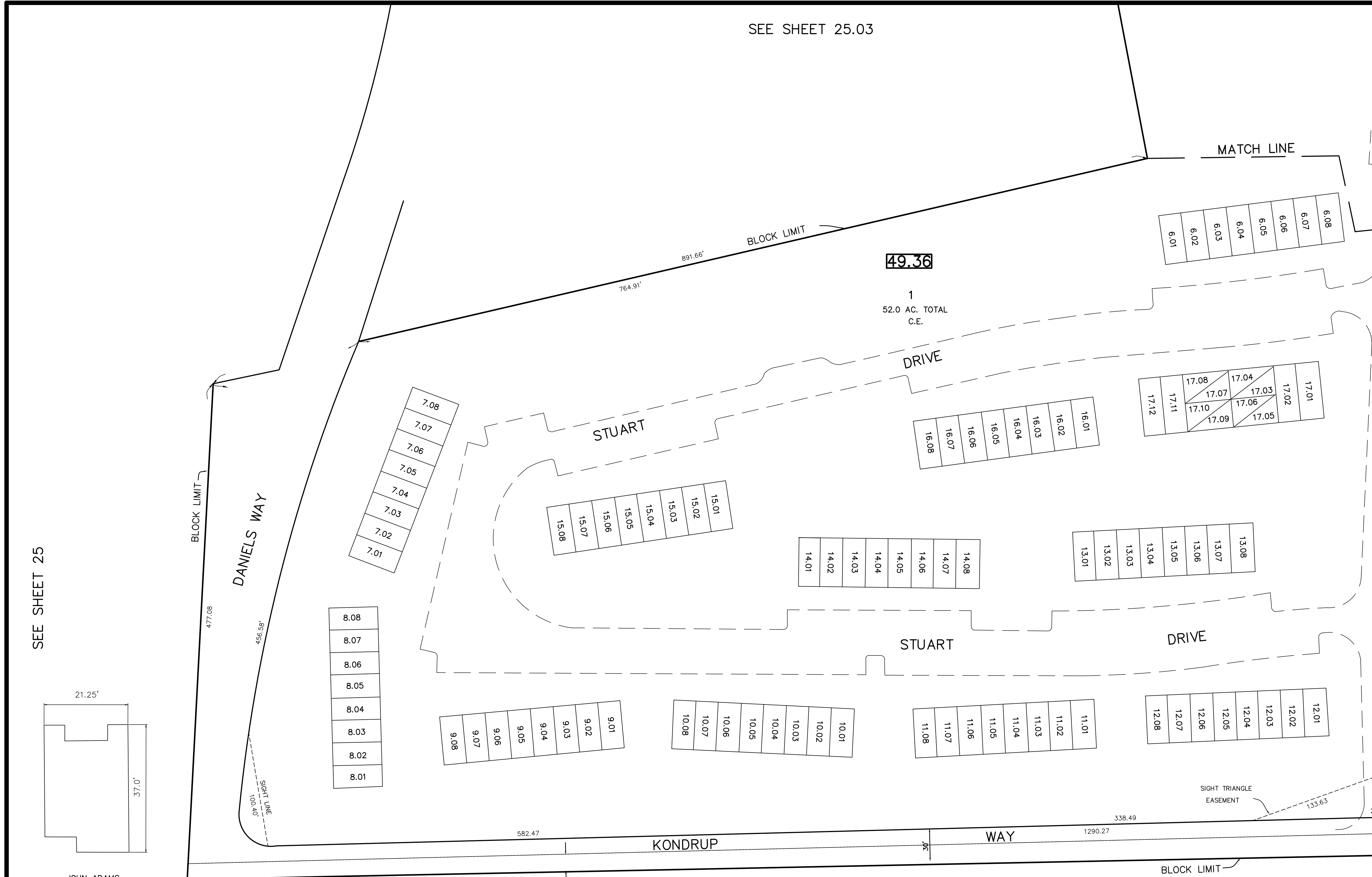
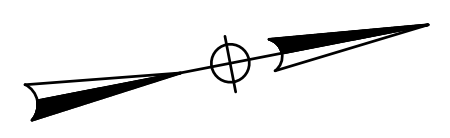
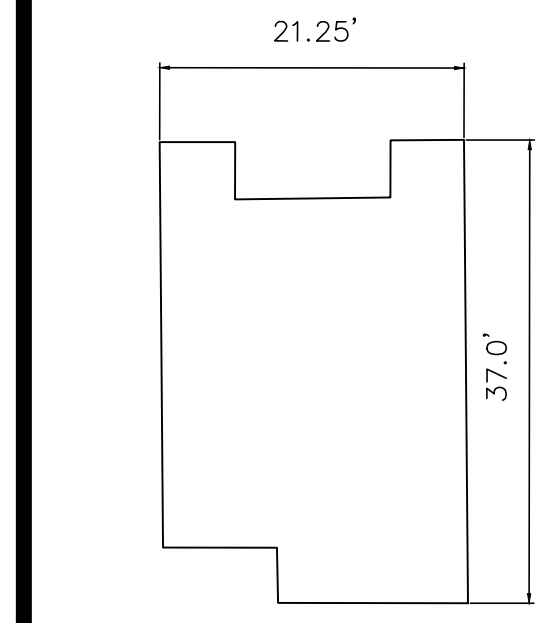


REVISIONS		
DATE	NAME	LIC. NO.

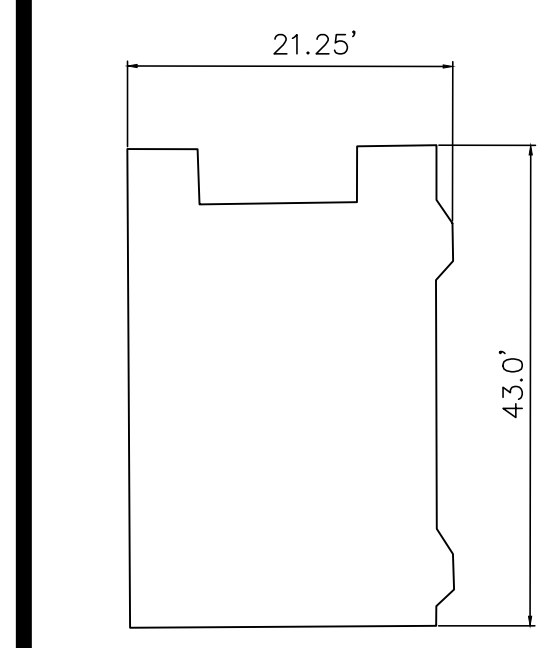


SEE SHEET 25

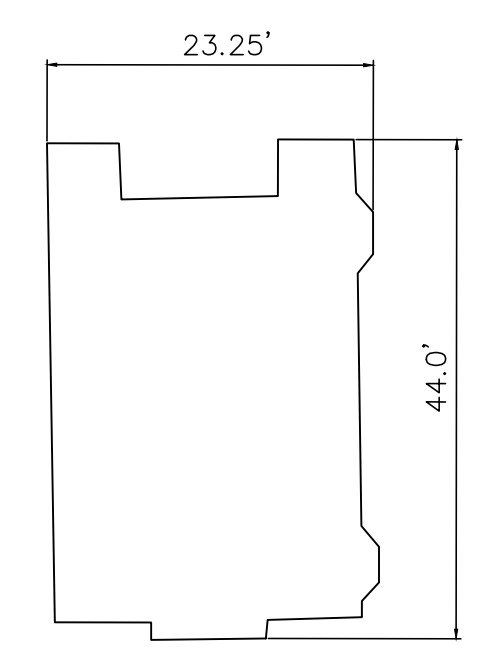
SEE SHEET 25.02



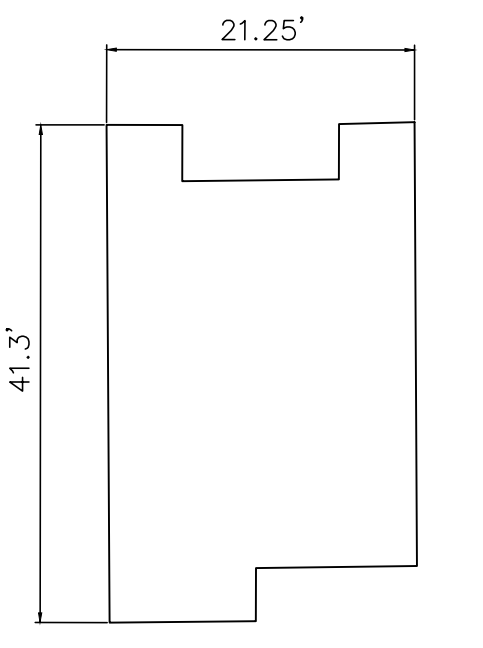
JOHN ADAMS
N.T.S.



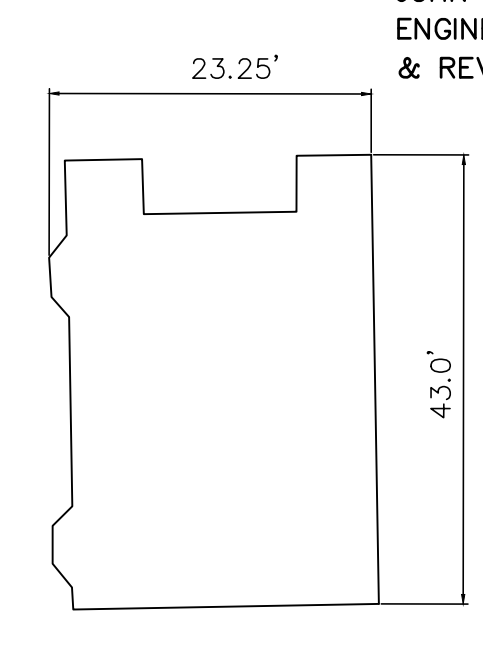
MOLLY PITCHER
N.T.S.



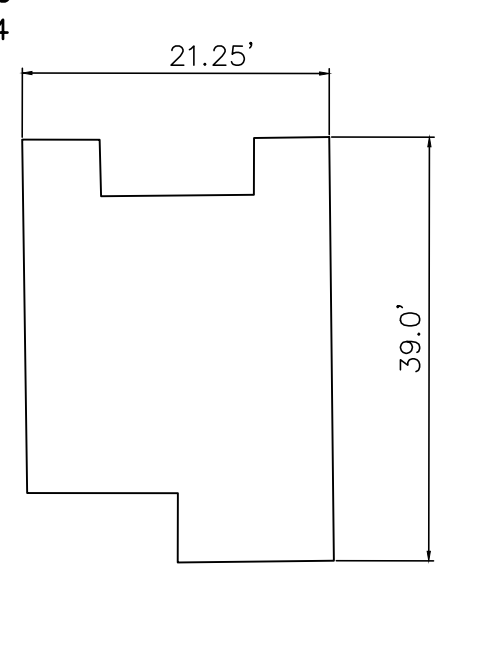
BETSY ROSS
N.T.S.



JOHN HANCOCK
N.T.S.



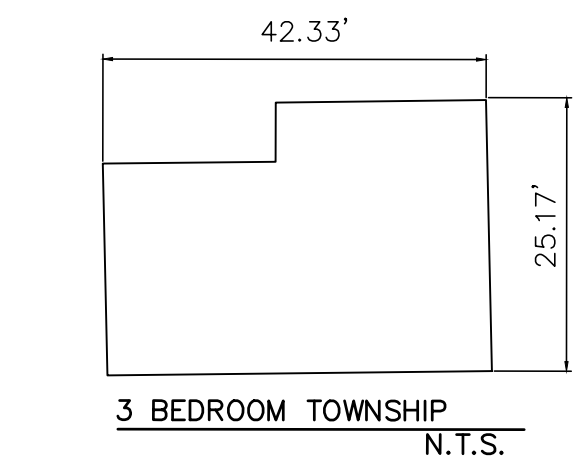
PAUL REVERE
N.T.S.



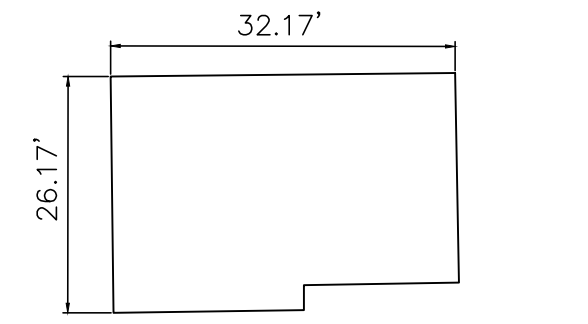
BEN FRANKLIN
N.T.S.

16.50' STRIP HALF OF 33' WIDE ROADWAY AS ILLUSTRATED ON "SURVEY PLAN OF LOTS 35 & 36, BLOCK 49" PREPARED BY JOHN S. TRUHAN CONSULTING ENGINEERS, DATED 10-17-84 & REVISED TO 7-28-87.

SEE SHEET 25

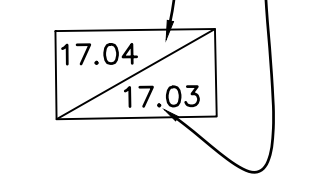


3 BEDROOM TOWNSHIP
N.T.S.



2 BEDROOM TOWNHOUSE

KEY:
EVEN NUMBER INDICATES 2ND. FLOOR UNIT
ODD NUMBER INDICATES 1ST. FLOOR UNIT
THIN DIAGONAL LINE DENOTES TWO-LEVEL CONDOMINIUMS



TAX MAP
TOWNSHIP OF FREEHOLD
MONMOUTH COUNTY, NEW JERSEY
SCALE: 1" = 50' JANUARY, 2008
TIMOTHY P. WHITE, P.E., P.L.S.
1 MUNICIPAL PLAZA
FREEHOLD, NEW JERSEY 07728



THIS MAP HAS BEEN DRAWN USING COMPUTER AIDED DRAFTING/DESIGN (CAD/D) AND COORDINATE GEOMETRY.

THIS MAP IS A COPY OF THE ORIGINAL MAP PREPARED BY WILLIAM HELD, P.E. & P.L.S. DATED MARCH 1962. THE ORIGINAL MAP IS ON FILE IN THE ENGINEER'S OFFICE.