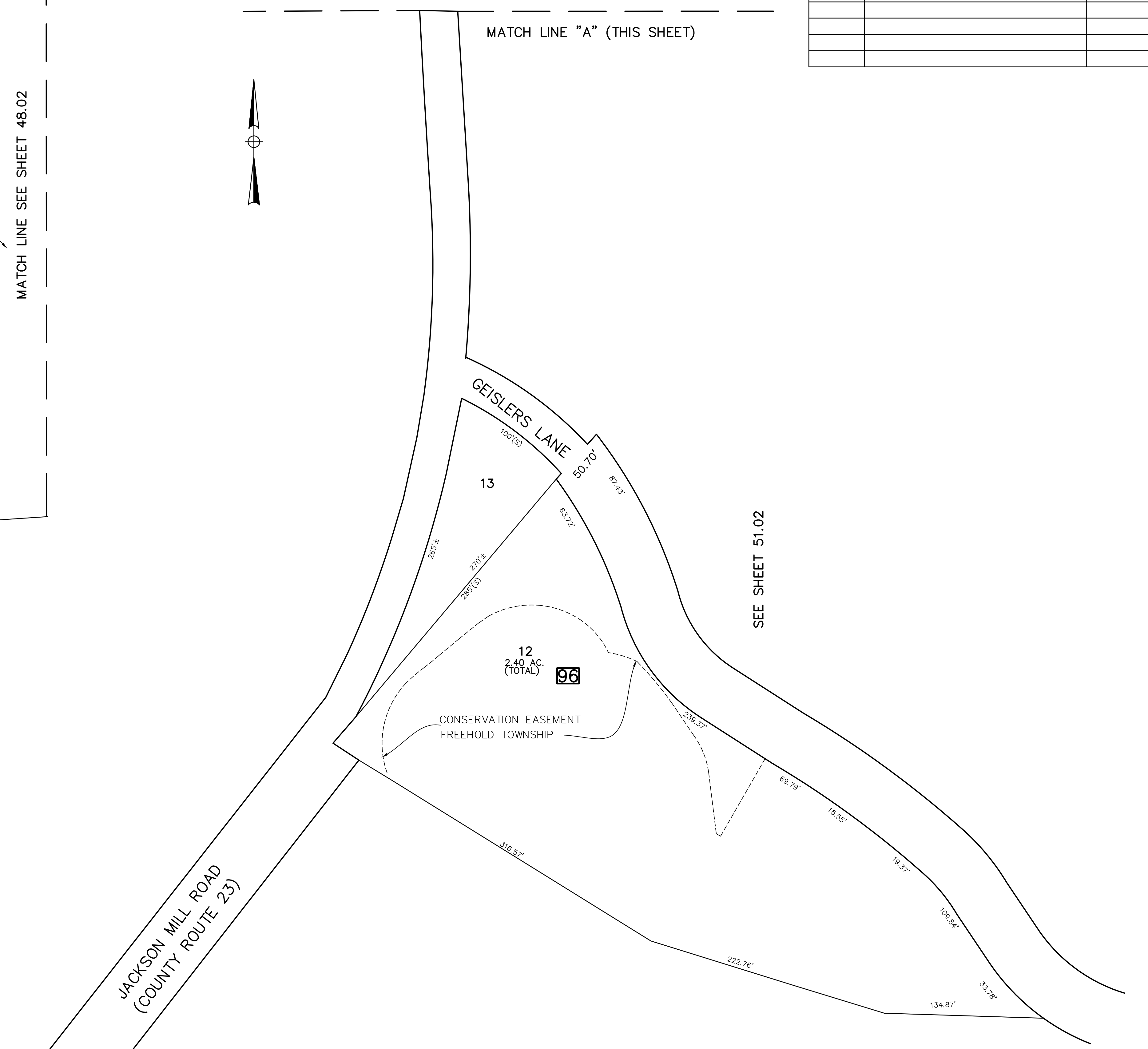
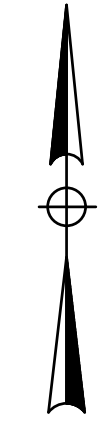
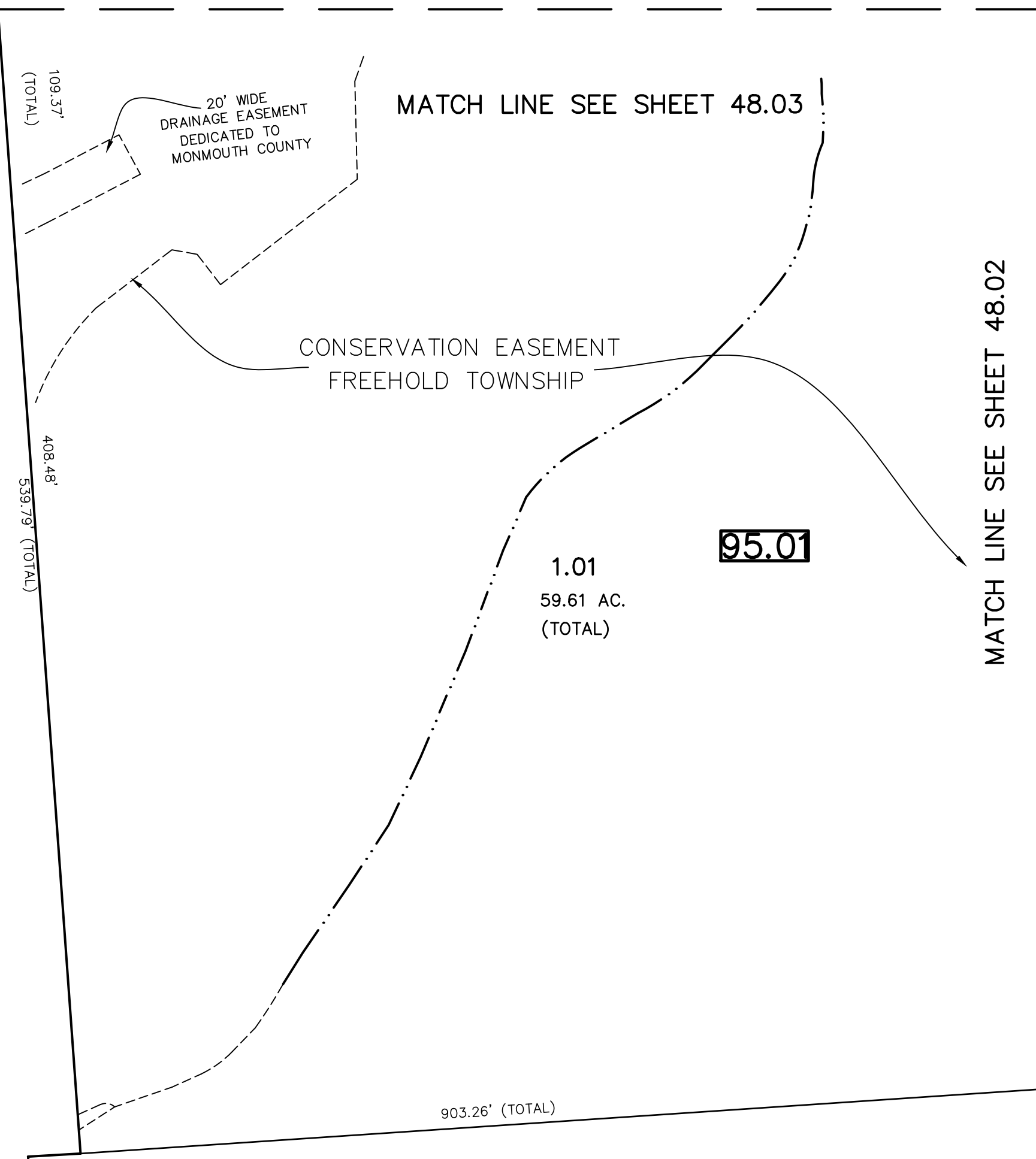
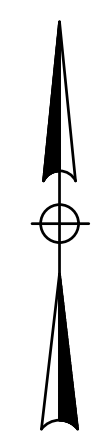


REVISIONS		
DATE	NAME	LIC. NO.



JACKSON MILL ROAD
(COUNTY ROUTE 23)

JACKSON MILL ROAD
(COUNTY ROUTE 23)

GEISLERS LANE

13

12
2.40 AC.
(TOTAL)
96

CONSERVATION EASEMENT
FREEHOLD TOWNSHIP

MATCH LINE "A" (THIS SHEET)

MATCH LINE "A" (THIS SHEET)

SEE SHEET 51.02

T&M
ASSOCIATES
11 TINDALL ROAD
MIDDLETOWN, NJ 07748
TEL 732-671-6400
FAX 732-671-7365
NEW JERSEY BOARD OF
PROFESSIONAL ENGINEERS AND
LAND SURVEYORS
CERTIFICATE OF AUTHORIZATION
246A27987500

TAX MAP
TOWNSHIP OF FREEHOLD
MONMOUTH COUNTY, NEW JERSEY
SCALE: 1" = 50' JANUARY, 2008
TIMOTHY P. WHITE, P.E., P.L.S.
1 MUNICIPAL PLAZA
FREEHOLD, NEW JERSEY 07728

THIS MAP HAS BEEN DRAWN USING COMPUTER AIDED
DRAFTING/DESIGN (CAD/D) AND COORDINATE GEOMETRY.

THIS MAP IS A COPY OF THE ORIGINAL MAP
PREPARED BY WILLIAM HELD, P.E. & P.L.S.
DATED MARCH 1962. THE ORIGINAL MAP IS ON
FILE IN THE ENGINEER'S OFFICE.